

## Replacing the X-Axis Idler

This procedure can be done with the X-axis assembly installed in the Fusion, but may be slightly easier if the rail is removed.

Figure 48 shows the location of the idler installed in the X-axis assembly.

It is not necessary to disassemble the X-axis assembly as shown in figure 48. This is only for reference.

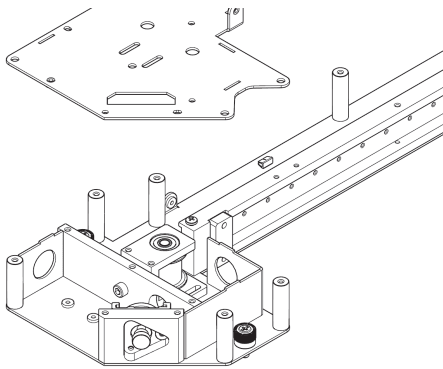


Figure 48

### Preliminary steps

Remove the Left hand side upper access panel

Remove the top cover from the X-axis Assembly.

Loosen the four Allen screws which secure the X-Axis Idler to the X-axis Assembly.

Remove the tension from the X-axis belt.

Remove the X-Axis tensioning screw from the X-Axis assembly.

Remove the left side X-Axis belt Clamp and let the belt fall free.

Reach to the rear of the X-axis assembly and pull the left side of the belt back so that the end that was just disconnected from the lens carriage is free from the idler assembly. There is

sufficient room to the rear of the X-Axis assembly to feed the belt back through when it is reassembled.

The Idler Assembly is now free of the X-axis. It should slide out between the standoff posts on the rear of the X-axis Assembly. See figure 49.

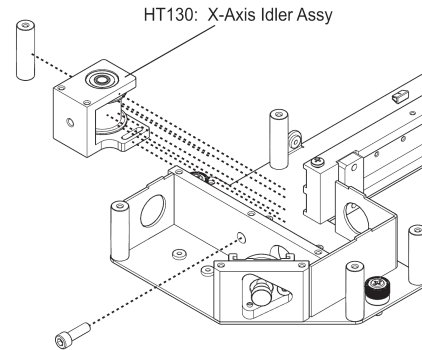


Figure 49

**If necessary, the standoff post, shown removed in image 22 can be removed by removing the two Phillips screws which secure it to the X-axis assembly.**

### Install the X-Axis Idler Assembly

Slide the X-axis belt through the opening between the Idler Frame and the pulley ensuring that the idler is oriented properly for installation.

Slide the Idler Assembly in to the X-axis Assembly.

Pull the tail of the X-axis belt through to the front of the X-Axis assembly and let it fall free.

Install, but do not tighten the X-axis Idler Mounting screws.

Start the X-Axis Belt tension screw at this time, but do not tighten.

Install the loose side of the belt in to the lens carriage assembly and install and tighten the belt clamp.

Install the Standoff post if it was removed.

Install the X-axis Assembly top cover.

Reconnect the engraver to its power source

Set the X-axis belt tension as described earlier in this manual.

Test for functionality.

Replace the upper left hand side cover.