



**EPILOG LASER**

16371 Table Mountain Parkway

Golden, Colorado 80403

Phone 303-215-9171

FAX 303-277-9669

www.epiloglaser.com

# **X Axis Belt Tensioning**

## ***For the Epilog Fusion***

9/30/2013

### **Requirements:**

#### **Tools:**

- 7/32" Allen Key
- 7/64" Allen Key

### **Overview:**

The following procedure describes how to tension the X axis belt in the case that of a positioning error caused by belt slippage. Contact Tech Support before attempting this procedure.

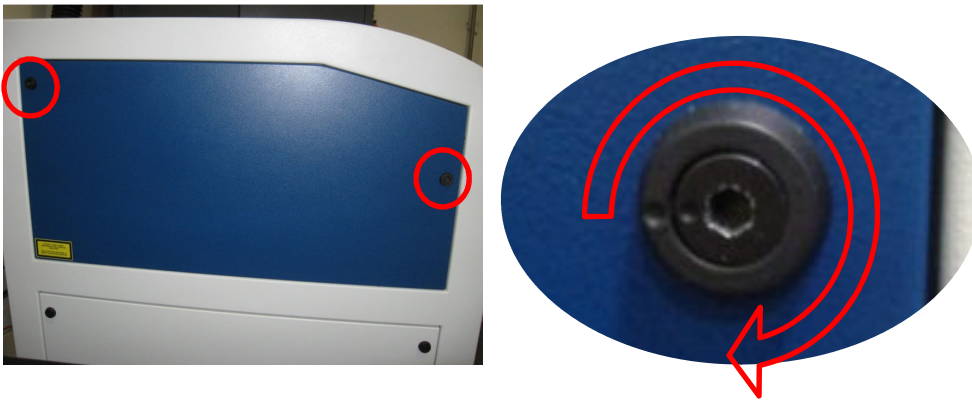
## Procedure A: Tensioning the X Belt

### Step 1:

Turn off the machine and disconnect it from its power source.

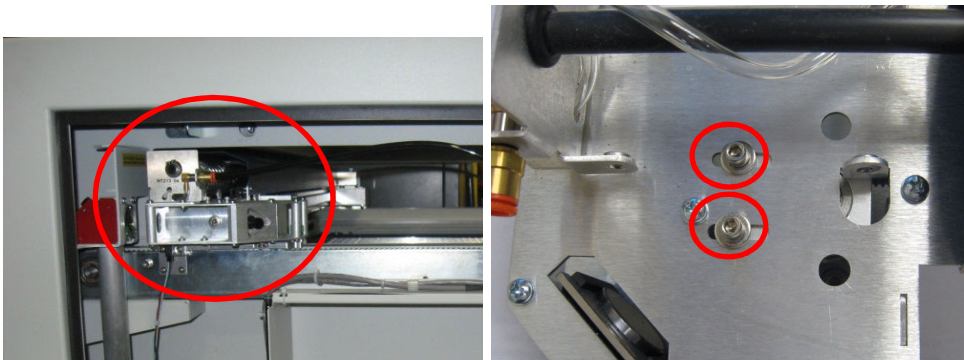
### Step 2:

Remove the Upper Left hand panel of the engraver. Using a 7/32" Allen Key, turn the two black Allen Screws clockwise about  $\frac{3}{4}$  turn and the panel will release. Remove and set aside the Access panel.



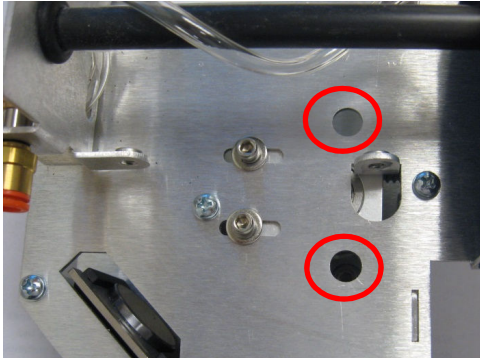
### Step 3:

Locate the Mirror and Pulley Block on the Left hand end of the arm. Two of the four Pulley Mounting Screws are on the top of the block. With a 7/64" Allen Key loosen (but do not remove) the first two Mounting Screws.



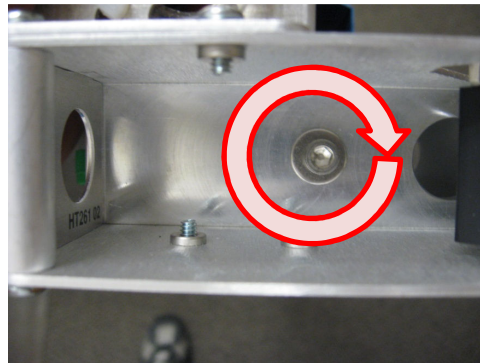
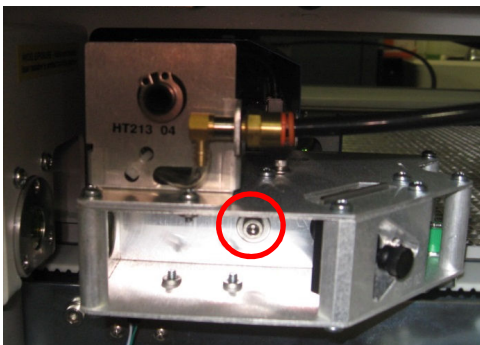
#### Step 4:

The next two Mounting Screws are located through two access holes in the Mirror and Pulley Block. With a 7/64" Allen Key loosen (but do not remove) the second two Mounting Screws.



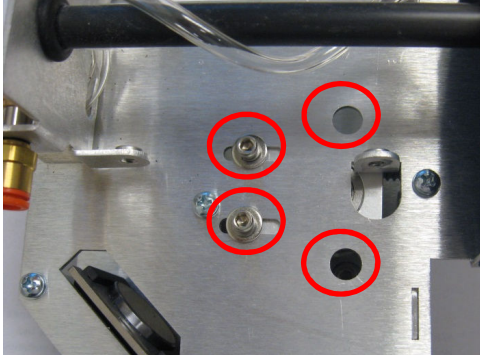
#### Step 5:

Locate the Tensioner Screw in the left hand end of the Mirror and Pulley block. It is inset into the left side. Using a 7/64" Allen Key, turn the screw Clockwise one (1) full turn.



### **Step 6:**

Tighten the Mounting Screws on the Mirror and Pulley Block to hold the belt tension in place.



### **Step 7:**

Replace the Left Side Access Panel.

## **Conclusion**

If you encounter any problems please contact Epilog Tech Support at (303) 215-9171.